

ANNUAL REPORT

2019-20



United Way
of Northeast Louisiana



BOARD OF DIRECTORS

OFFICERS

Board Chair | Blake Wheelis
Chair-Elect | Amy Sawyer
Secretary | Willie Hunter
Treasurer | Lisa Bradley

CHAIRS

Campaign Chair | Ashley West
Campaign Chair-Elect | Michael Ryan
Campaign Chair (LUJP) | Daniel Taylor
Campaign Chair-Elect (LUJP) | Corre Stegall
Community Impact Chair | Amy Sawyer
211 Advocate | Beverly Lewis

Don "DJ" Banks | Wells Fargo Advisors
Keith Biedenharn | Monroe Coca-Cola Bottling Co. UNITED
LaKeisha Bosworth | Ouachita Parish Public Library
Lisa Bradley | Louisiana Tech University
Richard Davis | Foster Farms
Brandon Ewing | Ewing Timber, LLC
Ernest Finch | Thomas & Farr Agency, Inc
Janice J. Garrison | JP Morgan Chase
Florencetta H. Gibson, PhD | LAMFT
Wes Gibson | CenturyLink
Jeff Glover | Child View
Alberta B. Green | ABG Professional Development Solutions
Todd Guice | Ouachita Parish School System
Susan Harwood | Hulsey, Harwood & Sheridan, CPA
Clay G. Hipp III | First National Bank
Courtney Hornsby | City of West Monroe
Willie Hunter Jr. | Willie Hunter Jr. & Associates Attny. at Law
John Kahl | St. Francis Medical Group

Barbara Leader | The News Star, A Gannett Company
Beverly V. Lewis, RN, BSN, MPA | Oschner LSUHSC-Monroe EA Conway
Billy McConnell | LaSalle Management Company, LLC
James W. Moore III | InterMountain Hotels
Adam O'Neal | Origin Bank
Michael Ryan, CFP | Wells Fargo Advisors
Amy Price Sawyer | North Delta Title / Mullins, Price, Sawyer, LLC
Nathan G. "Nat" Smith | BanCorp South
Stephanie Smith | Ouachita Parish Tax Assessor's Office
Shelia Snow | Monroe-WM Convention & Visitor's Bureau
Corre Stegall | Louisiana Tech University
Randy Stone | KARD Fox 14 / KTVE NBC 10
Daniel Taylor | Argent Financial Group
Jean Toth | The Food Bank of Northeast Louisiana
Brent Vidrine, PhD | Monroe City Schools
Rod Washington | City of Monroe
Harrington Watson III, PhD | Ouachita Parish School System
Ashley West | Progressive Bank
Blake Wheelis, Chair | Blake Wheelis State Farm Insurance Agency, Inc.

WHO WE ARE



Our agenda is the community's agenda— we stand with the residents, business leaders, and policymakers—to take action together and strategically invest in making a meaningful difference in the lives of people in Northeast Louisiana.

ASPIRATIONS | GOALS



CHILDREN, YOUTH, AND YOUNG ADULTS SUCCESSFUL IN SCHOOL AND LIFE

- 1 Children enter school ready
- 2 Students are successful in elementary school and prepared for middle/secondary school
- 3 Youth gain the knowledge, skills, and credentials so that they are prepared for the work-force and are able to obtain family sustaining employment



ECONOMIC OPPORTUNITY FOR ALL

- 1 Individuals and families have adequate and sustainable resources to support their needs
- 2 Individuals and families have the skills, knowledge, relationships and economic pathways they need to effectively increase and manage their income
- 3 Vulnerable populations maximize their ability to live with independence and dignity
- 4 People/organizations continue to work together to support a thriving, prosperous, robust economy



HEALTHY AND SAFE INDIVIDUALS, FAMILIES, AND COMMUNITY

- 1 Families/Individuals live in a healthy and safe environment
- 2 People/organizations work together to strengthen and build a more inclusive community

OUR IMPACT

WHAT WE'VE DONE

We facilitate and implement change with the help of our donors, grants, and community partners. Here's how United Way of Northeast Louisiana led the fight for our community in 2019.



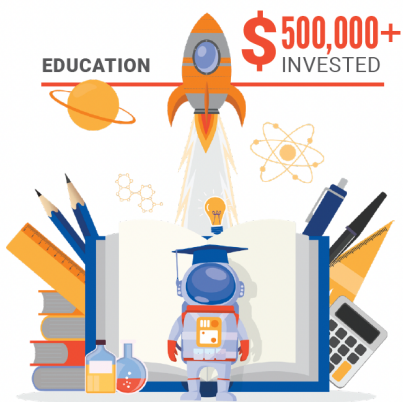
Sustainable employment is the best pathway out of poverty. That's why education has been and will continue to be our best investment into the future of our community. It will be a lifeline for families struggling to keep their jobs.



Today, families are struggling to have their most basic needs met. They find themselves without jobs and standing in long lines just to get a bag of food. Their financial stability needs are overwhelming, and United Way of Northeast Louisiana will be there—just like we've been in the past.



COVID-19 has impacted our community in significant ways. Before, our community faced significant health disparities, particularly among vulnerable populations like older adults and those with mental health issues. Now these populations are even more in need.

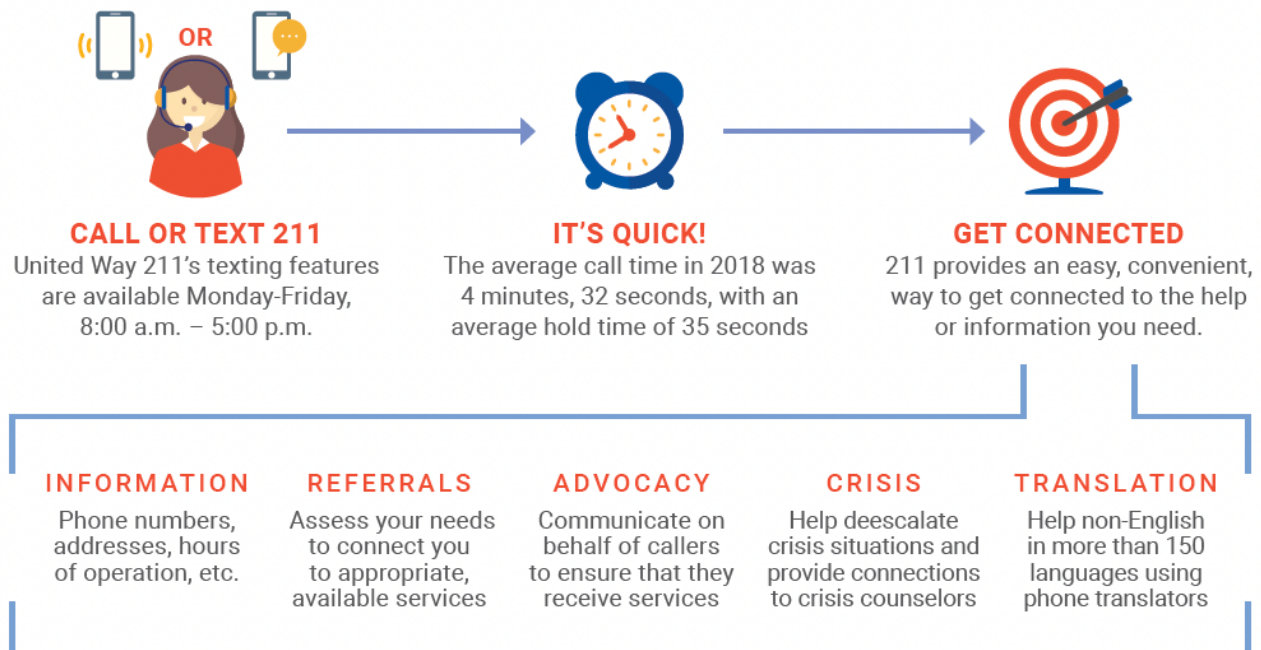


OUR IMPACT

UNITED WAY 211

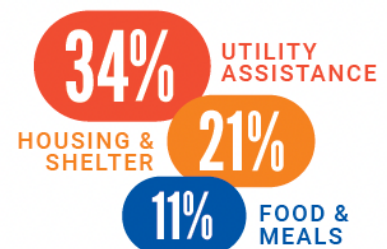
United Way 211, a free, confidential service of United Way of Northeast Louisiana, is your Convenient Community Connection to information and resources.

United Way 211's trained, experienced staff is available **24 hours a day, 7 days a week, 365 days a year...even holidays**. In 2018, United Way 211 staff handled **12,556 contacts**.



CALLERS CONTACT 211 ABOUT

- Basic Needs (food, clothing, housing)
- Consumer Information
- Volunteer Opportunities
- Criminal & Legal Services
- Education
- Environmental & Public Health/Safety
- Health Care
- Income Support & Employment
- Individual & Family Life
- Leisure Activities & Recreation
- Mental Health & Substance Abuse Services
- Organizational & Community Services



**View data from the annual United Way 211 report at unitedwaynela.org/211*

OUR IMPACT

TORNADO RESPONSE

United Way of Northeast Louisiana's work is more necessary than ever because of recent disasters. So many in our community have been financially impacted. **But we can make a difference.**

ON APRIL 12TH, OVER 500 HOUSEHOLDS WERE AFFECTED BY A TORNADO THAT CAUSED SIGNIFICANT AND DEVASTATING DAMAGE IN OUACHITA PARISH.

UWNELA TORNADO RELIEF FUND



\$123,020 TOTAL RAISED

as of 9/28/20

EMERGENCY SHELTERING



FOR OVER 700 INDIVIDUALS

since 4/12/20



FROM 246 HOUSEHOLDS

since 4/12/20

Since April 12th, United Way NELA 211 has been able to work with local officials to place individuals and households into emergency sheltering.

HELP FOR OUR NEIGHBORS: TORNADO RESOURCES



Public collection of resources and information for those suffering damage

OUACHITA TORNADO LONG-TERM RECOVERY GROUP



FOR OVER 168 INDIVIDUALS

as of 9/28/20



FROM 48 HOUSEHOLDS

as of 9/28/20

OTLTRG is a partnership with volunteers from local government, nonprofits, faith-based organizations, and businesses, with the mission to work together to help the most vulnerable in our community achieve a level of pre-disaster stability, or a new normal. These individuals and families have been assisted with rent/mortgage, utilities, construction, and/or furniture assistance.



PHOTO BY CITY OF MONROE

AWARD WINNERS

TOP 10

Platinum Lumen \$460,815
Gold Origin Bank \$153,559
Silver ANGUS Chemical Company \$97,564
Bronze Specialty Management Services Ouachita (SMSO) \$59,052
5 St. Francis Medical Center \$58,566
6 Ouachita Parish School System \$56,710
7 Strauss Interests, Inc. \$54,450
8 Entergy Louisiana, LLC \$54,051
9 Progressive Bank \$53,303
10 Graphic Packaging International - West Monroe Mill \$51,935

2020 New Campaign Award

Courtesy Chrysler Dodge Jeep Ram
Durrett Law & Title - Monroe
Jackson Parish Correctional Center
Jim Taylor Buick GMC
Richwood Correctional Center
Traxler Construction Company, Inc.
Woodard & Associates APAC

2020 Special Achievement

Acadian Ambulance Service
Blake Wheelis State Farm
Holyfield Construction

2020 LIVE UNITED Award

Regional: City of West Monroe
LUJP: Union General Hospital

2020 VolunteerUNITED Award

Regional: Entergy Louisiana, LLC
LUJP: WestRock Hodge Mill

2020 Going the Extra 10% Award

AIMS, Inc.
Bancroft Bag, Inc.
Blake Wheelis State Farm
Business Alliance Financial Services
CenterPoint Energy
Century Next Bank
Christopher Youth Center
Cross Keys Bank
Drax Biomass, Inc.
Ensure, The Insurance Agency
Graphic Packaging International - West Monroe Mill
HiTech Computers of Ruston Inc
Hunt Forest Products
Impact Health Care Solutions

JPMorgan Chase Bank, N.A.
KTVE 10 NBC KARD FOX 14
LaSalle Management, M&T Properties, and Correct Solutions Group
Lazenby & Associates, Inc.
Mid South Extrusion
Monroe Housing Authority
Newcomer, Morris & Young
Ouachita Parish Public Library
Ouachita Valley Federal Credit Union
Ruston Glass & Mirror
Scott Powerline & Utility Equipment, LLC
University of Louisiana Monroe
Wagner Logistics

2020 Campaign Coordinator or Team Award

Regional: Brandi Green & Katelyn Reed
Graphic Packaging - West Monroe Mill
Shelva Thomas & Temika Cooks
Monroe Housing Authority
LUJP: Ashley Avery
First National Bank

2020 Circle of Honor

Allen, Green & Williamson, LLP
ANGUS Chemical Company
Argent Financial Group, Inc.
Associated Business Printing, Inc.
ATMOS Energy Corporation
BancorpSouth Bank
Business Alliance Financial Services
Centric Federal Credit Union
Century Next Bank
Community Financial Insurance Center, LLC
Cross Keys Bank
D.A.R.T.
Don M. Barron Contractor, Inc.
Durrett Law & Title
Ensure, The Insurance Agency
Ewing Timber, L.L.C.
Financial Institution Services Corporation
First National Bank

Heard, McElroy & Vestal, LLP
Hulsey, Harwood & Sheridan, CPA
Hunt Forest Products
Hunt, Guillot & Associates, LLC
IBERIABANK
Impact Healthcare Solutions
Jim Taylor Ford Lincoln
LaSalle Management, M&T Properties, and Correct Solutions Group*
Lincoln Builders, Inc.
Marion State Bank
Monroe Chamber of Commerce
Monroe Coca-Cola Bottling Company UNITED
Monroe Housing Authority
NAI Faulk & Foster

Newcomer, Morris & Young
North Delta Title Company
Origin Bank
Ouachita Parish Assessor's Office
Polaris of Ruston
Progressive Bank
Scott Powerline & Utility Equipment, LLC
Snellings, Breard, Sartor, Inabnett, & Trascher, LLP
Southern Apparatus Services, Inc.
Standard Enterprises, Inc.
Strauss Interests, Inc.
The Lincoln Agency, LLC
United Way of Northeast Louisiana
Wagner Logistics
Wells Fargo Advisors

UNITED WE FIGHT. UNITED WE WIN.

LP/UP/JP

Children, Youth and Young Adults Successful in School and Life 99,378.92

Boy Scouts Traditional Scouting (Boy Scouts, Cub Scouts, & Venturing) 9,000.00
Wellspring (The) Youth Empowerment Program (YEP) 40,202.92
Boys & Girls Club of North Central Louisiana Project Learn 50,176.00

Economic Opportunity for All 32,000.00

Food Bank Agency Partner Program 8,000.00
Senior Program 24,000.00

Healthy and Safe Individuals, Families and Community 256,246.00

American Red Cross Emergency Services 10,000.00
DART Domestic Violence Program 69,100.00
Health Hut (The) Basic Lab Testing for the Uninsured 10,000.00
LA Methodist Children & Family Services Family Counseling Center 42,000.00
Lincoln COA Home Delivered Meals 35,000.00
Med Camps of Louisiana Summer Camping 45,000.00
NELA Sickle Cell Anemia Foundation Social Service Provision 7,000.00
St. Vincent de Paul Prescription & Counseling Services 12,000.00
Union COA Home Delivered Meals 26,146.00

Regional

Children, Youth and Young Adults Successful in School and Life 255,626.37

Boy Scouts Learning for Life 13,861.66
Traditional Scouting (Boy Scouts, Cub Scouts, & Venturing) 51,008.07
Boys & Girls Club of NELA Project Learn 67,745.48
Children's Coalition Children's Coalition Early Head Start 23,952.00
Christopher Youth Center Emergency Youth Shelter 37,818.78
Food Bank Backpack for Kids 12,606.26
Girl Scouts Girl Scouting Leadership Experience 11,818.37
OIC High School Equivalence Test 2,038.81
I CAN 4,727.35
Wellspring (The) Youth Empowerment Program (YEP) 30,049.60

Economic Opportunity for All 193,481.22

ARCO Customized Employment 12,900.00
Food Bank Agency Partner Program 6,050.00
Senior Program 16,560.00
Ouachita Council On Aging Home Delivered Meals 36,424.41
Homemaker Program 11,000.00
Transportation (Non-Emergency Medical) 28,060.00
W. Ouachita Senior Center Senior Adult/Community Supp. Svcs. 82,486.81

Healthy and Safe Individuals, Families and Community 342,543.10

American Red Cross Emergency Services 19,550.00
ARCO The Children's Center at ARCO 116,250.00
Med Camps of Louisiana Summer Camping 14,400.00
NELA Sickle Cell Anemia Foundation Social Service Provision 18,720.33
Ouachita Council On Aging Congregate Meals 7,515.00
Rays of Sonshine Project Hope 15,975.00
The Zone 3,939.00
St. Vincent de Paul Prescription & Counseling Services 23,321.57
Wellspring (The) Counseling & Family Development Center 12,676.20
Domestic Violence Program 84,000.00
Permanent & Transitional Housing 26,196.00

FINANCIAL HIGHLIGHTS

UNITED WAY FINANCIAL HIGHLIGHTS

FOR THE YEAR ENDED JUNE 30, 2020 (Audited)

BALANCE SHEET		STATEMENT OF SUPPORT, REVENUE & EXPENSES	
Assets		Revenues	
Cash	1,402,243	Income from Campaign & Other Contributions	2,858,924
Investments	579,431	Income from Additional Pledges	38,573
Pledges Receivables	1,271,490	Grants, Sponsorship & Other Income	1,100,875
Grants & Other Receivables	349,847	Total Revenue	\$ 3,998,372
Fixed Assets	312,449		
Other Assets	54,361		
Total Assets	\$ 3,969,821		
Liabilities & Net Assets			
Liabilities		Expenses	
Allocations & Designations Payable	825,879	Agency Services/Fund Distribution	1,199,840
Other Payables	196,902	Supporting Services	816,475
Deferred Revenue	125,481	Program Services	1,526,325
Total Liabilities	\$ 1,148,262	Total Expenses	\$ 3,542,640
Net Assets			
Unrestricted Net Assets	1,155,770	Increase (Decrease) in Net Assets	\$ 455,732
Temporarily Restricted Net Assets	1,665,789		
Total Net Assets	\$ 2,821,559		
Total Liabilities & Net Assets	\$ 3,969,821	United Way of Northeast Louisiana is audited by the firm of Heard McElroy & Vestal, LLC, Certified Public Accountants, Monroe, LA.	



United Way
of Northeast Louisiana

unitedwaynela.org

Monroe | 1201 Hudson Lane
Ruston | 939 N. Trenton Street