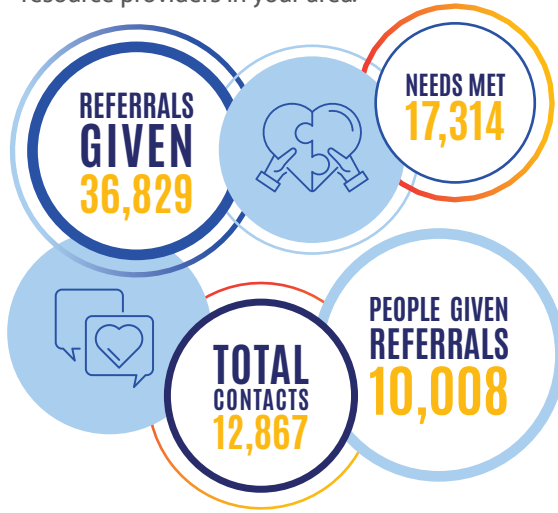
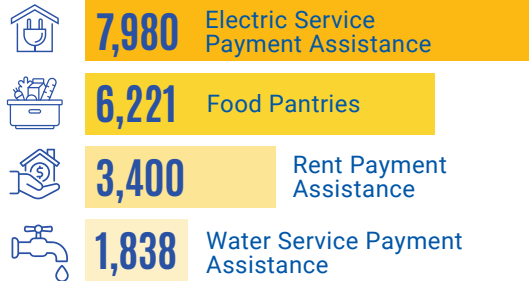


# UWNELA 211

As your direct line to a community that cares, 211 is an easy to remember phone number that connects you to available information and resource providers in your area.

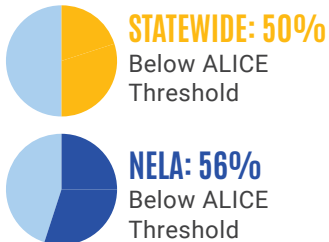


## TYPES OF REFERRALS



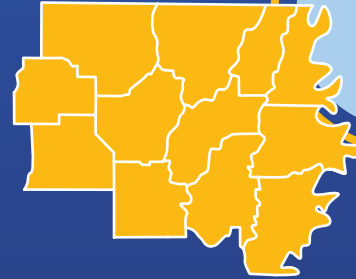
## ALICE

Asset Limited.  
Income  
Constrained.  
Employed.



2025 Update on Financial Hardship. Find more details at [UnitedWayNELA.org/alice](https://UnitedWayNELA.org/alice).

# PARISHES SERVED



12

Caldwell, East Carroll, Franklin, Jackson, Lincoln, Madison, Morehouse, Ouachita, Richland, Tensas, Union, and West Carroll

## MONROE

1201 Hudson Lane, Monroe, LA 71201  
318-325-3869

## RUSTON

939 North Trenton Street, Ruston, LA 71270  
318-232-0055

## FINANCIAL HEALTH CENTER

1001 Desiard St., Monroe, LA 71201  
318-232-0055

## UnitedWayNELA.org

[unitedway@unitedwaynela.org](mailto:unitedway@unitedwaynela.org)

VOLUNTEER! [UnitedWayNELA.org/volunteer](https://UnitedWayNELA.org/volunteer)



UNITED WAY  
Northeast Louisiana

# UNITED IS THE WAY

WE BUILD THRIVING COMMUNITIES  
IN NORTHEAST LOUISIANA

# UNITED WAY NELA ASPIRATIONS AND GOALS

## CHILDREN SUCCESSFUL IN SCHOOL AND LIFE



629 students, 12,580 books, 467 volunteers, 2,682 letters, and 141 companies engaged during the 2024-25 school year.

**Why it's powerful:** Demonstrates long-term literacy impact and strong community investment in student success.



13 partner schools, 38 4th and 5th grade students, and 4 educational excursions including Louisiana Tech University and the State Capitol.

**Why it's powerful:** Builds future leaders through education, civic engagement, and real-world experiences.

## Out-of-School Enrichment (Summer Camp)

121 students served in the largest summer camp yet at Henrietta Johnson Community Center, focused on emotional development and STEM-themed learning.

**Why it's powerful:** Combines fun, safety, and personal growth to prevent summer learning loss and provide stability for children.

## ECONOMIC OPPORTUNITY FOR ALL

### VITA (Volunteer Income Tax Assistance)

151 individuals served, \$160,799 in tax refunds, and \$30,200 saved on tax preparation fees in the 2024 tax year.

**Why it's powerful:** Delivers direct financial impact—money back in the pockets of local families



20 workshops, with outcomes like 2 home purchases, employment gains, and 40 hours of financial education per participant

**Why it's powerful:** Equips people with the tools to achieve long-term financial independence and stability.



627 high school students participated in 2024; now with the potential to expand to local junior high students.

**Why it's powerful:** Prepares the next generation for financial success by teaching real-life budgeting and money management.

## HEALTHY INDIVIDUALS AND COMMUNITY

### Health Equity & Access through UWNELA's Community Connection Specialist

2,400+ households reached with health outreach and 211 materials, plus direct delivery of hygiene supplies, food, and basic necessities across 12 parishes.

**Why it's powerful:** Builds healthier communities by removing barriers to care, promoting equity, and connecting people to essential services through 211, partnerships, and local outreach.

### Benefit Application Support (Community Connections)

UWNELA is using the Benefit Kitchen tool to help individuals and families access vital health-related benefits like Medicaid, SNAP, and CHIP—removing barriers to care and promoting wellness.

**Why it's powerful:** Advances health equity by connecting vulnerable populations to preventive care, nutrition, and stability—improving outcomes and reducing disparities across our region.

2-1-1

Northeast Louisiana

Offers anyone in need a centralized source for referrals and information from the UWNELA's Financial Health Center.

**Why it's powerful:** Reliable, universal access point.